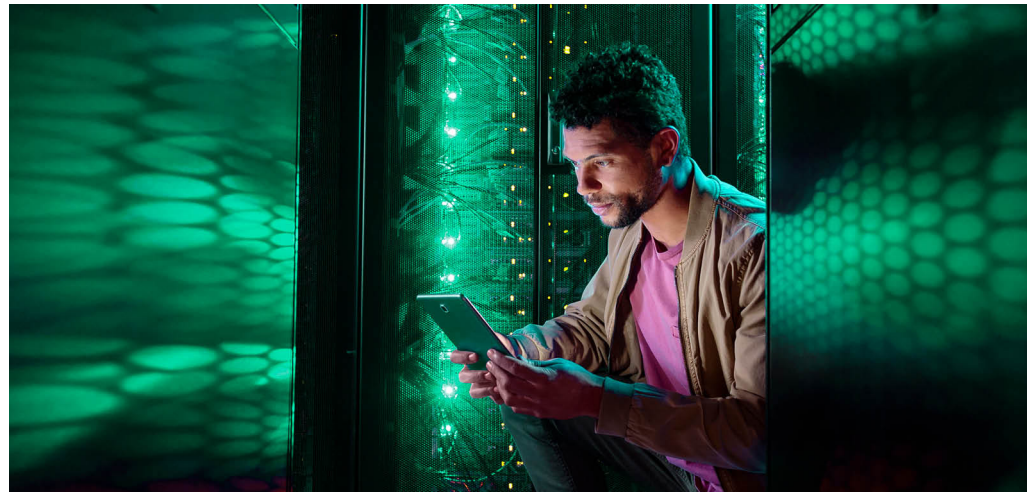




# POWER YOUR APPLICATIONS WITH WORKLOAD-OPTIMIZED STORAGE ON DEMAND

Meet mission- and business-critical storage needs with scalable, high-performance, and cost-effective storage solutions with HPE GreenLake



**HPE GreenLake brings the cloud experience—self-serve, pay-per-use, scale up and down and managed for you—to apps and data everywhere, in edges, colocations, and data centers. It enables you to free up capital, boost operational and financial flexibility, and free up talent to accelerate what's next for you.**

Data powers innovation and business outcomes, enabling informed decisions and smooth operations. Organizations must be confident that data is available, accessible, protected, and recoverable.

Cloud has made data storage agile, scalable, and cost-effective. Resources are simply available on-demand, enabling developers to accelerate application lifecycles and business users to speed database or transaction processing.

And yet, for reasons such as security, governance, and compliance, significant volumes of data must be stored on-premises. This can become costly, especially for high-performing, resilient solutions.

With lengthy procurement cycles for IT resources, developers and business users might wait up to nine months for additional storage capacity, slowing down application deployment and database processing, while reducing their ability to meet spikes in demand. That's why 67% of organizations over-invest in storage infrastructure.<sup>1</sup>

Hewlett Packard Enterprise now makes it possible to avoid overprovisioning while achieving flexibility and scalability in edge, colocations, and data centers with [HPE GreenLake](#). Bringing the cloud experience to your data helps meet your needs for compliance, security, and performance without sacrificing the benefits of the cloud.

Store and back up data for mission-critical, business-critical, and general-purpose applications with preintegrated storage solutions delivered to your location in as little as 14 days with HPE GreenLake.

With the pay-per-use model there are no up-front capital costs; only pay for the capacity actually consumed above your reserved amount. Also, benefit from predictable cost modeling with consumption analytics that put you in control of usage and costs. Plus, your storage infrastructure is managed for you, freeing up your team to support strategic initiatives.

**Achieve cost efficiencies, resiliency, agility, and performance, as well as security and control—all in your on-premises environments.**

<sup>1</sup> Futurum Research, July 2019

**“The long-term key to success is better understanding the intrinsic benefits of using pay-per-use models and relying less on up-front capital purchases dependent on frequently inaccurate prediction methods. Avoiding unnecessary storage costs and inefficiencies means choosing a strategic partner that fulfills the full spectrum of emerging storage requirements.”<sup>2</sup>**

– According to analysts, Daniel Newman, Ron Westfall, and Fred McClimans, Futurum Research.



Time-to-market:  
**75% faster<sup>3</sup>**



CAPEX savings:  
**30%–40%<sup>3</sup>**



IT resource savings:  
**40%<sup>3</sup>**



**85% less**  
unplanned  
downtime<sup>4</sup>

Make the right purchase decision.  
Contact our presales specialists.



Chat



Email



Call



Get updates

## STORE DATA YOUR WAY

No matter what your storage needs, HPE GreenLake can provide resilient, powerful infrastructure—delivered in as little as 14 days, in a pay-per-use model, with workload-optimized storage services.

### Mission critical

- Improve performance for applications that require ultra-low latency and extreme availability
- Accelerate mission-critical apps with HPE Alletra 9000/HPE Primera, an all-flash storage service featuring high-performance, highly scalable functionality and 100% availability

### Business critical

- Ensure resiliency for business-critical applications that carry strict service-level agreements (SLAs) for availability and performance
- Achieve fast, reliable data access and 99.9999% measured availability from a flash-efficient storage service featuring HPE Alletra 6000/HPE Nimble Storage

### General purpose

- Gain reliability for mainstream workloads with general-purpose storage requirements
- Optimize costs and efficiencies with HPE Nimble Storage Adaptive Flash arrays, designed for both primary and secondary workloads with 99.9999% measured availability

### Data protection

- Attain robust, enterprise-wide data protection
- Leverage intelligent deduplication to reduce footprint with HPE StoreOnce for rapid on-premises backup and recovery

## SCALE TO FIT ALL YOUR STORAGE NEEDS

Storage services through HPE GreenLake are turnkey, built on an intelligent data platform, and designed to meet your mission-critical, business-critical, general-purpose, and data-protection needs. Working with you to develop the right mix for your resource needs, HPE includes a buffer of capacity to scale on demand. And with HPE GreenLake, you only pay for capacity used.

### Speed time to value

Get storage in as little as 14 days that is plug-and-play to immediately meet business needs.

### Scale as needed scalability

Deploy extra capacity in minutes from your buffer and only pay for what is actually used. HPE monitors usage trends over time, and if demand persists, additional capacity can be delivered.

### Lower costs

Avoid up-front infrastructure expenses, while gaining complete transparency of costs and usage with HPE GreenLake Central, a self-service platform that centralizes operations and insights across your hybrid environment.

### Simplify IT

Offload the heavy lifting of managing your infrastructure with management services included with your HPE GreenLake service.

**Unlock the value of your data today.**

**LEARN MORE AT**  
[hpe.com/greenlake/storage](https://hpe.com/greenlake/storage)

<sup>2</sup> The Power Of Consumption-Based On-Premises Service in Meeting Dynamic Storage Demands

<sup>3</sup> The Total Economic Impact™ Of HPE GreenLake, a commissioned study conducted by Forrester Consulting, June 2020

<sup>4</sup> IDC white paper, sponsored by HPE, The Business Value of HPE GreenLake Management Services, January 2020