

SOLUTION BRIEF

# NetApp Cloud Insights

Control the performance  
and utilization of your  
cloud workloads



Cloud Insights is designed specifically for today's cloud-based infrastructure and deployment technologies and provides advanced analytics on the connections between resources in the environment.

Cloud Insights is simple to use. Because it's hosted in the cloud, it's easy to get up and running fast. You'll have real-time data visualization of the topology, availability, performance, and utilization of all your infrastructure, including both cloud and on-premises multivendor resources.

Cloud Insights quickly inventories what resources you have, figures out the interdependencies across them, and assembles a topology of your environment. You'll have end-to-end visibility into what resources are supporting which applications.

There are 3 editions of Cloud Insights: Basic, Standard and Premium. Basic Edition is free to all NetApp customers. Standard and Premium editions offer additional capabilities and are priced by infrastructure being monitored. To see the current table of editions and features please visit: <https://cloud.netapp.com/cloud-insights>

### **Key features**

Cloud Insights provides end-to-end monitoring and analysis into the health, performance, cost and security of infrastructures that are shared across multiple applications and lines of business.

Whether these infrastructures are On-prem, in the Cloud or running Kubernetes, Cloud Insights optimizes their utilization reduces mean time to recover, delivers chargeback and show-back reports and enables business process automation. Here are the cloud Insights key features.

### **Visibility**

From the public cloud to the datacenter, full-stack visibility of infrastructure and applications from hundreds of collectors available, all in one place.

### **Key benefits**

- Monitor your whole infrastructure, on-premises and in the cloud and at any scale with a simple, easy-to-use, SaaS-based tool.
- When you have issues, find the problems before they affect customer satisfaction.
- Optimize your growing cloud spending by understanding unused infrastructure and overprovisioned workloads.
- Detect ransomware attacks before it's too late
- Easily satisfy compliance requirements for data usage audit reporting saving time & money

### **Kubernetes topology**

Kubernetes cluster explorer allows you to seamlessly navigate your cluster topology from pods right down to the infrastructure resources they're consuming, including mapping persistent storage volumes. Advanced troubleshooting through correlation of infrastructure performance metrics and application performance, and chargeback reporting to help organizations provide Kubernetes as a service to their application teams.

### **Usage optimization**

Effective resource management lets engineers and administrators proactively reduce waste and maximize utilization as part of their daily workflows to prevent performance bottlenecks and do more with less.

### **Ransomware and Insider Threat Detection**

Protect your data with early detection and actionable intelligence on ransomware and other malware incursions. Alert on potential misuse or theft of key intellectual property by malicious parties, both internal and external to your organization.

### **Data Usage Audit Reporting**

Ensure corporate compliance by auditing access and usage patterns to your critical corporate data on-premises or in the cloud.

### **Dashboards**

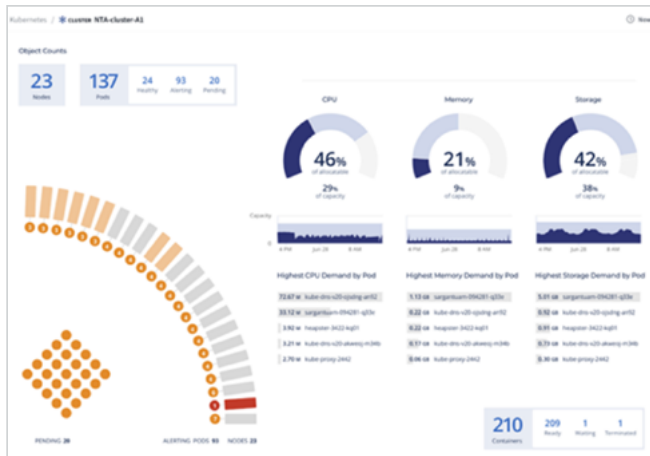
A Dashboard Gallery creates relevant dashboards instantly, or easily customize to your specific needs.

## Alerts

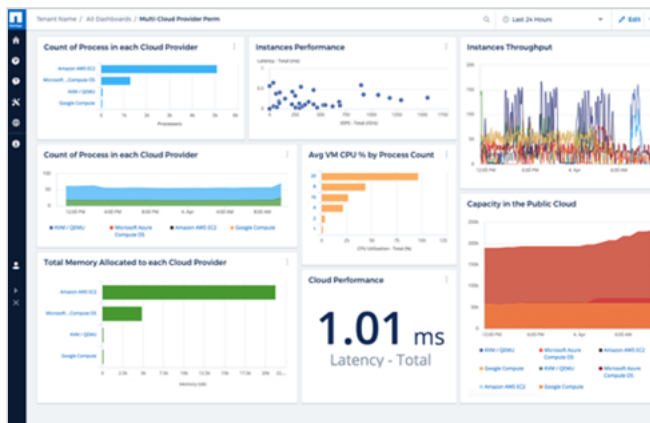
Less noise, more relevance. Targeted and conditional alerts you can customize precisely.

## Integration

An extensive API allows integration into a wide variety of third party services and applications. From metadata integration with a CMDB to alerts to a wide variety of messaging and events management tools, and custom metrics from just about any application and service out there.



Kubernetes dashboard showing clusters and utilization



Cloud Insights dashboard showing multi cloud usage and performance

## Machine Learning

Automatically build topologies, correlate metrics and detect greedy or degraded resources, and resource contention. Alert on anomalous user behavior to detect security threats.

## Active IQ integration

Active IQ's predictive analytics directly visible from Cloud Insights. Directly identify Active IQ risks and take advantage of prescriptive guidance.

**“NetApp Cloud Insights advanced analytics for pinpointing problem areas are outstanding. It helps us to pinpoint where issues may be, whether they are with storage, the network, on the clients, or with the application itself.”**

Ed Alexander —Senior Systems Administrator, Large Software Company  
[Read the full review at IT Central Station](#)

## About NetApp

In a world full of generalists, NetApp is a specialist. We're focused on one thing, helping your business get the most out of your data. NetApp brings the enterprise-grade data services you rely on into the cloud, and the simple flexibility of cloud into the data center. Our industry-leading solutions work across diverse customer environments and the world's biggest public clouds.

As a cloud-led, data-centric software company, only NetApp can help build your unique data fabric, simplify and connect your cloud, and securely deliver the right data, services and applications to the right people—anytime, anywhere.

