

Why cloud migration needs network transformation

Every cloud transformation project is different. But if you're operating with a traditional network architecture, there's no way to complete it without transforming your network first. Traditional WANs are too expensive, too difficult to manage, and too rigid to adapt easily to the traffic patterns required for cloud access.

But you're not alone. Across the globe, other enterprise businesses are feeling the pressure too.

The push to upgrade networks for the cloud

82% feel hindered by network complexity

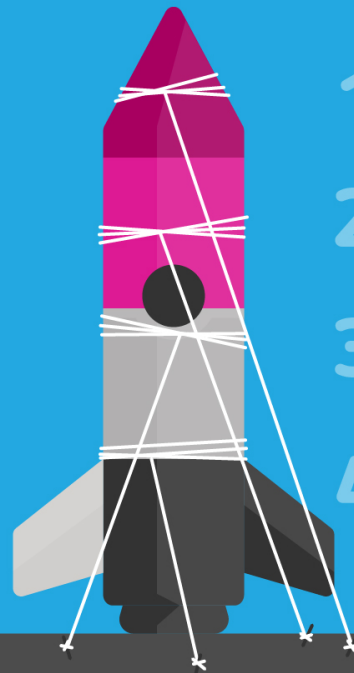
The percentage of IT leaders that believe that their organization's ability to migrate apps to the cloud is hindered by the increased complexity of their network infrastructure¹

94% are already moving forward

The percentage of organizations already reassessing, modifying, or overhauling their networks to better facilitate app delivery across their hybrid cloud environments¹

1. Multi-Cloud Application Delivery Survey, IDC, June 2016.

Four factors keeping a journey to the cloud from getting off the ground



1

Vulnerable to network outage

An unreliable WAN cannot ensure that an outage on a single network link won't interrupt remote and branch access to applications.

2

Complex and difficult to manage

Complicated networks keep connection costs high, hurt visibility into app performance, and decentralize policy definitions.

3

Poor user experience

The inability to actively manage traffic across the network hinders high-quality branch communications and a high-quality user experience.

4

Blind to security risks

A traditional WAN might not be able to provide multilayered security and adapt to real-time risk by segregating data based on application or source.

Citrix NetScaler SD-WAN™ can take your network to the cloud and beyond

Wherever you are in your journey to the cloud, and wherever you're going next, NetScaler SD-WAN can help you break free and allow users, IT, and the business to thrive.

To learn more about NetScaler SD-WAN and how it can position your network for cloud success, visit www.citrix.com/sdwan.

CITRIX®