

A US-based college maximizes storage efficiency.



NetApp Cloud Data Sense helps a small school make big savings of time, money, and resources.

A small college in South Florida serving a highly-specific student body profile needed to put its focus on serving students' needs, not managing IT. When the decision was made to migrate from a small on-premises data center to a fully managed solution provided by NetApp partner Veytec, there was an opportunity for additional cost saving by reducing the amount of data stored.

NetApp Cloud Data Sense was used to not only identify the permissions needed to migrate and secure the data accurately to the cloud, it was used to identify old data that could be deleted, increasing data security, reducing the volume of data managed, and reducing the overall cost of storage by more than 50 percent. NetApp and Veytec are at the top of the class.



Managed Service Provider

Cloud Data Sense helped save more than 50% on storage costs by identifying stale, duplicate, and non-business-related data.

A focus on learning

Schools of all sizes today must balance the need to deliver rich experiences and services with their available IT budgets. The small Florida college serving a specific student profile is no exception. Providing in-classroom learning in small group settings, residential services and a rich campus environment are the priorities.

To focus on delivering world-class education to students, the college outsources its IT services. It relies on Veytec, a South Florida business IT and communication provider that specializes in designing, implementing, and maintaining converged technology infrastructure and networks. Veytec also provides support services such as managed IT services that optimize the way companies communicate with customers and across the enterprise.

In addition to supporting curriculum with applications, the college has highly sensitive personal data on every student and faculty member, such as SSN, birth information, and financial records. Some of this data is used sporadically and sometimes it isn't needed at all. The college needed a way to make sense of all the data, and how it could be stored cost-effectively and deleted when possible. Veytec to the rescue.

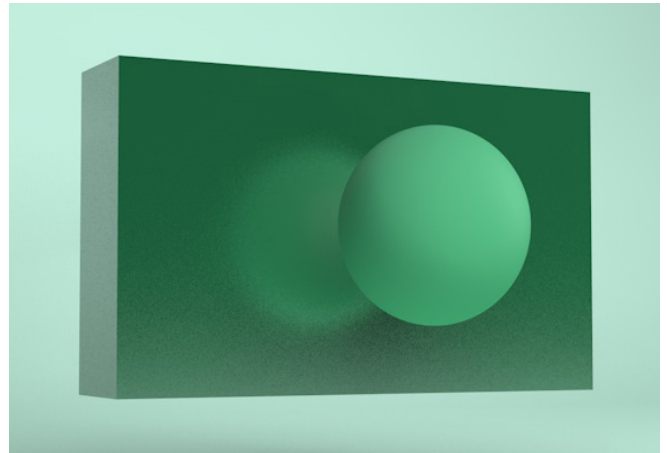
Preparation for a migration

When Veytec took over IT responsibilities for the college, one of the first challenges the company faced was the need to migrate the school's data - approximately 10TB - to the managed environment. Veytec chose to use NetApp® storage solutions, based on the strength of industry-leading NetApp ONTAP® data management software.

During the migration, Veytec discovered that permissions were not being copied over correctly from the original share location to the NetApp shares that were set up. Manual resolution would be extremely time consuming, requiring team members to look through trees of nested shares. They would have to compare source and target locations to make sure the correct

permissions were in place after the migration. Veytec needed a solution that could automatically identify and document the premigration and postmigration permissions so that sensitive data could be properly secured both during and after migration.

As a part of the service, Veytec also needed to do a complete audit of the file shares being migrated to identify all data related to sensitive and personal identifiable information (PII). This critical task would have been nearly impossible if they had tried to do it on their own by manually analyzing each file.



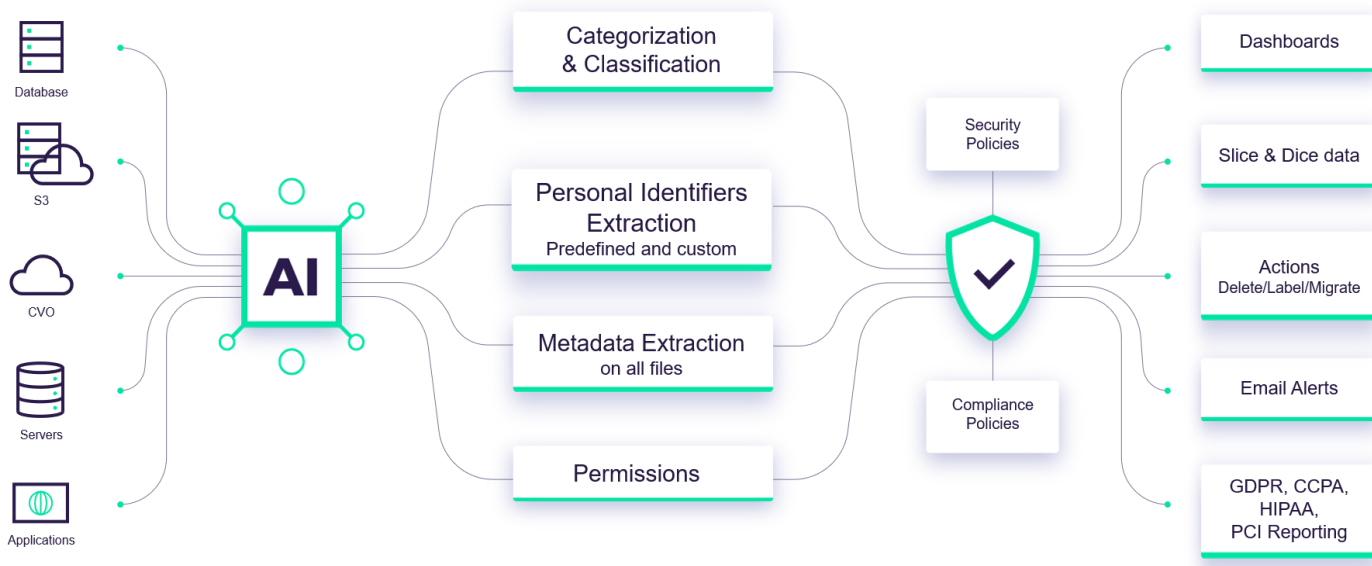
Cloud Data Sense is top-of-class

Veytec found that NetApp Cloud Data Sense could identify the permissions that were in place at the original campus storage location. The team used this information to correctly secure the data at its new location in the Veytec hybrid cloud. They also compared the files between both locations to make sure all designated files were moved over during the migration. Cloud Data Sense automated the process of identifying the duplicate and stale data that did not need to be migrated and could even be deleted. As a result, the college's storage costs were reduced. The result: a reduction in data volume from 10TB to approximately 4TB and a reduction of over 50 percent in storage costs.

Cloud Data Sense allows the college to gain ongoing insight into the type of information and sensitive data the college captures and stores. These insights support informed decisions in the future about what to store, for how long, and when the data can be deleted.

Immediate insight into your data

Cloud Data Sense offers governance and compliance capabilities for immediate insight into all types of data. For data governance needs, Cloud Data Sense provides detailed information about sensitive data and immediately tells what permissions are in place



and whether sensitive information is exposed. These insights help users make informed decisions that minimize the risk of internal or external threats to the business. Cloud Data Sense shows exactly how much duplicate, stale, and non-business-related data is occupying valuable storage space. With this information, an organization can identify and remove redundant or irrelevant storage to further optimize storage costs.

From a compliance perspective, Cloud Data Sense scans data, identifies it, and classifies it into categories that represent the kind of information in the files. The software uses these classifications to create automated, legally ready compliance reports for the Health Insurance Portability and Accountability Act (HIPAA), privacy risk assessment, the Payment Card Industry Data Security Standard (PCI DSS), and other policy-based reports at the click of a button.

These simple-to-use and easy-to-understand features completely automate the typical tedious, repetitive, and incredibly inefficient efforts of maintaining strong data protection posture and an optimized storage footprint. There is no need to manually discover,

modify, and organize your data; Cloud Data Sense performs these tasks by using artificial intelligence, machine learning, and policy-based automation.

NetApp and Veytec get Straight A's

Because of the insights that the NetApp Cloud Data Sense service provided during the initial migration project, the service has become a staple of the college's IT arsenal. Cloud Data Sense continues to scan, identify, organize, and optimize the college's storage. With Cloud Data Sense in place, the college is in a better position to protect its data, save money, and focus on providing a world-class education experience with its limited IT resources.

Learn more about [Veytec](#).

To learn more or start your free trial, visit the [NetApp Cloud Data Sense page](#).

NetApp products
[Cloud Data Sense](#)





 +1 877 263 8277

About NetApp

In a world full of generalists, NetApp is a specialist. We're focused on one thing, helping your business get the most out of your data. NetApp brings the enterprise-grade data services you rely on into the cloud, and the simple flexibility of cloud into the data center. Our industry-leading solutions work across diverse customer environments and the world's biggest public clouds.

As a cloud-led, data-centric software company, only NetApp can help build your unique data fabric, simplify and connect your cloud, and securely deliver the right data, services and applications to the right people—anytime, anywhere. To learn more, visit www.netapp.com

